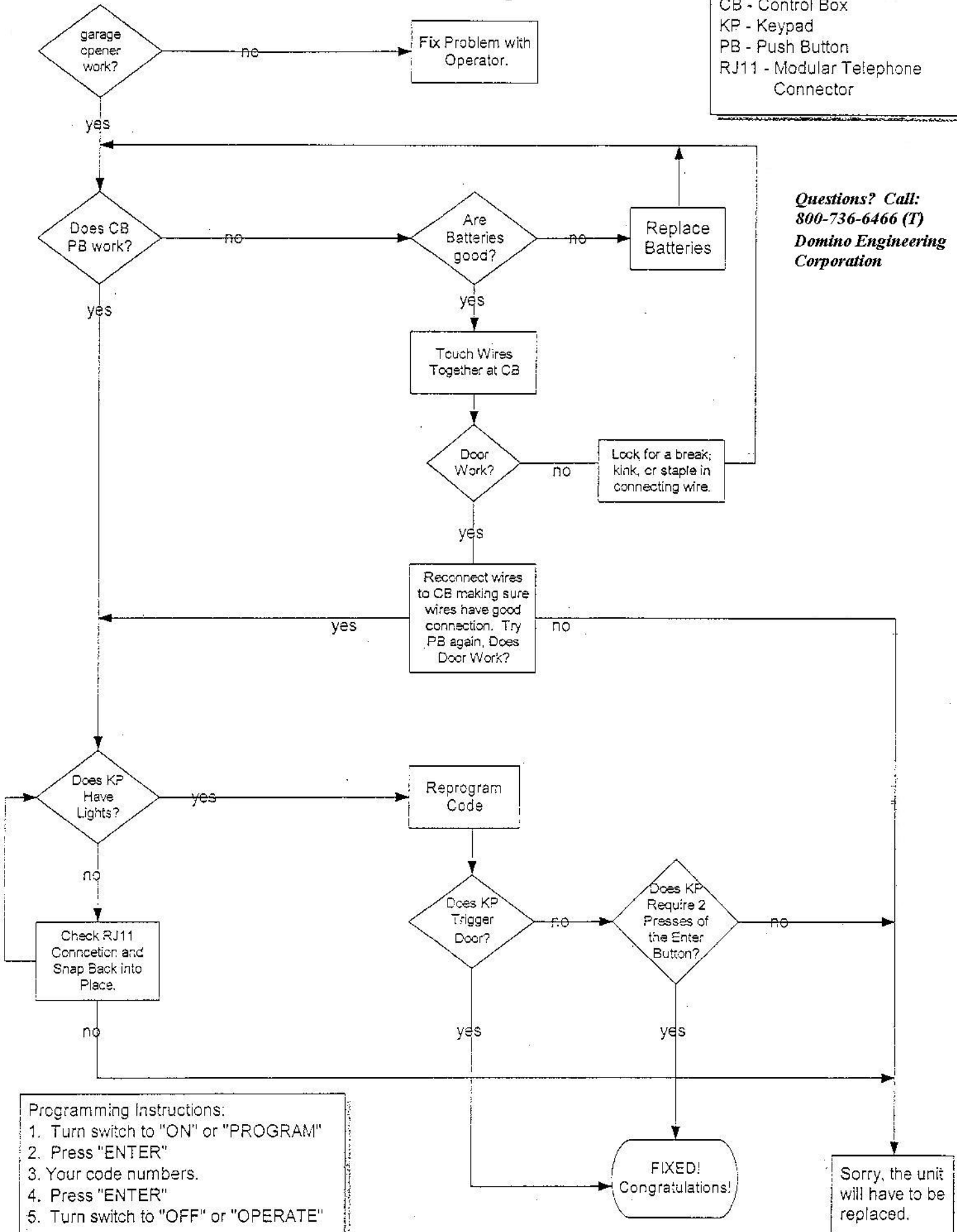


# Troubleshooting Domino Keyless Entry

## Model GD-1 for Garage Doors

**LEGEND:**  
 CB - Control Box  
 KP - Keypad  
 PB - Push Button  
 RJ11 - Modular Telephone Connector

*Questions? Call:  
 800-736-6466 (T)  
 Domino Engineering Corporation*



**Programming Instructions:**  
 1. Turn switch to "ON" or "PROGRAM"  
 2. Press "ENTER"  
 3. Your code numbers.  
 4. Press "ENTER"  
 5. Turn switch to "OFF" or "OPERATE"